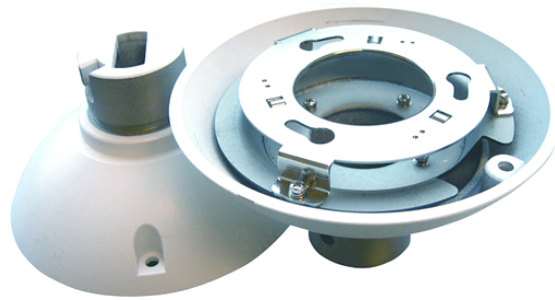
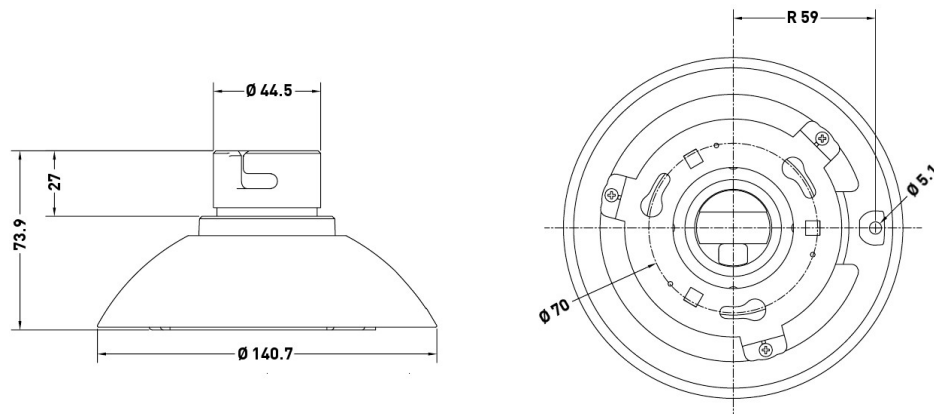


Dome Housing & Brackets

GRUNDIG**SPECIFICATIONS**

Suitable for	GCI-C0735P, GCA-C0335P, GCA-C0345P
Body material	Die cast aluminium
Colour	White
Weight	0.5 kg
Dimensions w*h*d	Ø 140.7 X 73.9 mm

DIMENSIONS

Design and specifications are subject to change without notice

Status 03/2015

ACCESSORIES



GBR-WA02
Wall Mount Bracket



GBR-CE01
Pendant Mount Bracket



GBR-AM02
Adapter Ring for Pelco Pendant Mount
with 1,5" NPT thread